

Puoi trovare l'ultima versione del manuale, manuali applicativi, video tutorial e manuali in altre lingue, cliccando sul link di seguito o scannerizzando il QR code a lato

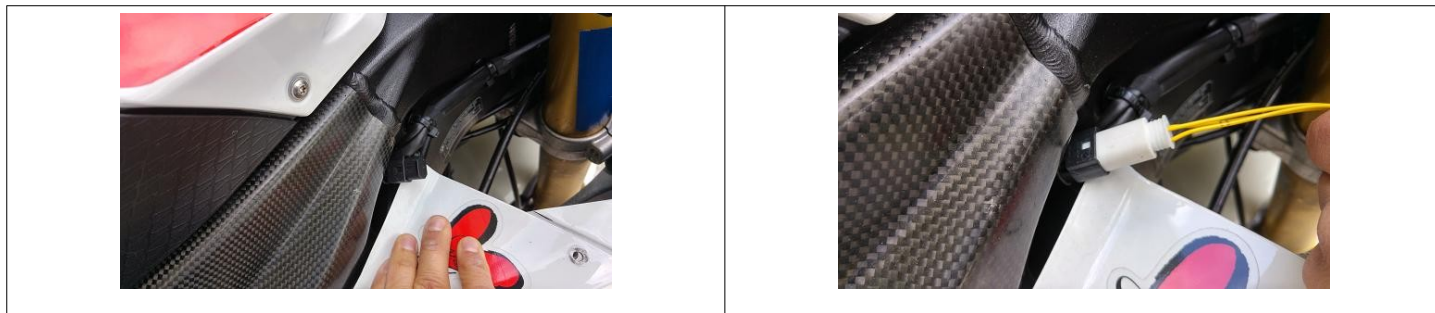
You can find the latest version of the manual, application notes, video tutorial and manuals in other languages, clicking on the link below or scanning the QR code on the side

<https://pzracing.it/download/>



Installation

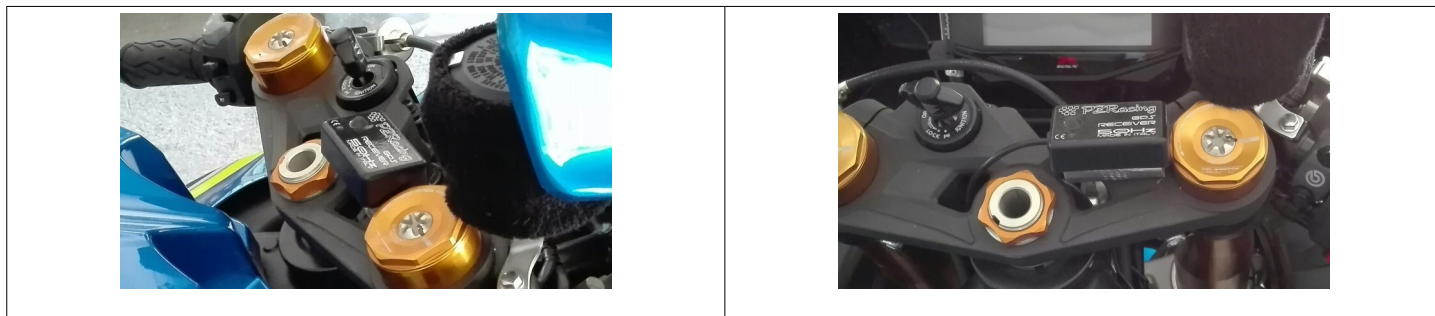
Fit the B-Tronic connector to the special input of your motorcycle, you can find it on a right hole of the frame under the tank, check the images below to locate the connector. Remove the cap and connect the B-Tronic's connector.



GPS receiver installation

N.B: do not place cameras or other sources of electromagnetic interference near the receiver to avoid the GPS signal being disturbed

Place the receiver module with the writing facing upwards and in a horizontal position with a clear and unobstructed view of the sky, **it is recommended to place on the steering plate as horizontal as possible trying to avoid that is facing the pilot.**



The tank and the lateral air intakes of the motorcycle are highly not recommended as the GPS receiver would be completely covered by the chest and head of the rider and also during a turn the GPS receiver would be completely obscured by the motorcycle itself.

Fix the entire length of the sensor cable, make sure that the cable is not under tension when using the device.

Usage

N.B: to be able to reveal the lap times you must activate the lap timer on the dash, refers to motorcycle's instruction manual.

Start session

The receiver works fully automatically, turns on when the vehicle is turned on, hooks up to the satellites and loads the correct track automatically, then after the vehicle has started it will start showing the lap time on the motorcycle dashboard and memorizing the data if the function has been activated. Below is the legend of the product status via the receiver LED:

- **Solid:** Wi-Fi on, GPS receiver not ready. The signal which is being received is not strong enough to locate the position. If a long period of time has passed or if you have travelled several kilometres from the place you last switched on the device, you have to wait up to 4-5 minutes to receive a signal; otherwise one minute is necessary to locate the position. If the led does not change status, position the receiver in a less restricted area because it couldn't receive a good signal.

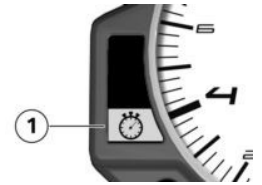
- **Slow blink (1s off, 1s on):** Wi-Fi on, GPS receiver ready. You can start your session.

- **Fast blink (400ms off, 100ms on):** Wi-Fi off, motorbike moving. After the bike has started and has reached 30Km/h for 5 seconds, the Wi-Fi is turned off and the receiver will be ready to show the lap time on the dashboard.

N.B: if your circuit is not in memory send an email to tech@pzracing.it with the name and location of the circuit, we will send you a firmware update with your track

“Fastest Lap Anticipated” function

On models S1000RR from 2012 and models S1000R you can find “fastest lap anticipated” light; When you start a new lap your intermediate times are taken every 100mt of the track and compared with the corresponding intermediate times of the best lap stored in memory. If your intermediate times show that you are faster than on your previous best lap the processor anticipates that this lap will be your new best time. The indicator for the fastest lap lights up. In this way at any point of the track you will know if you are riding or not the best lap with a quick glance.



Wi-Fi

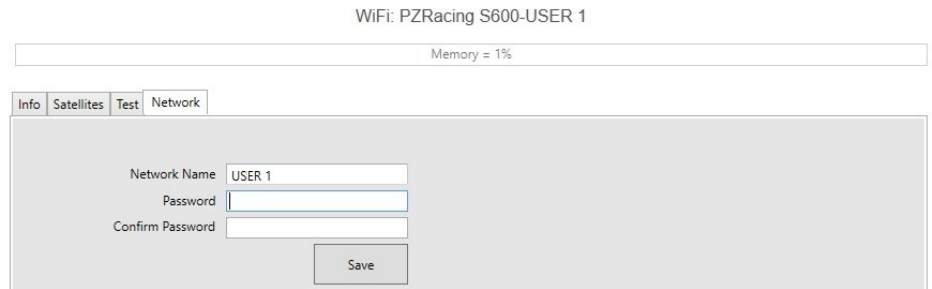
The GPS receiver is equipped with an integrated Wi-Fi module that will be used for data download and settings related to storage. Wi-Fi turns on when the product is turned on and turns off when the motorcycle exceeds 30Km/h, to reactivate the Wi-Fi it will be necessary to turn off and on the GPS receiver.

The default data for the Wi-Fi network are the following:

Network name: PZRacing S600-USER 1

Password: 12345678

From the software, in the Network tab, it is possible to change the last part of the network name (USER 1) and the password. Once modified it will be necessary to close the RacePro program, turn off and on the GPS receiver.



Setting

In the Info tab you can set the GPS receiver:

Time Fuse: time fuse setting

Memorization: data recording activation (default: yes)

Directory: selection of the destination folder. In case you have not selected any folder the software will ask for it before downloading.

Driver Name: name of the driver

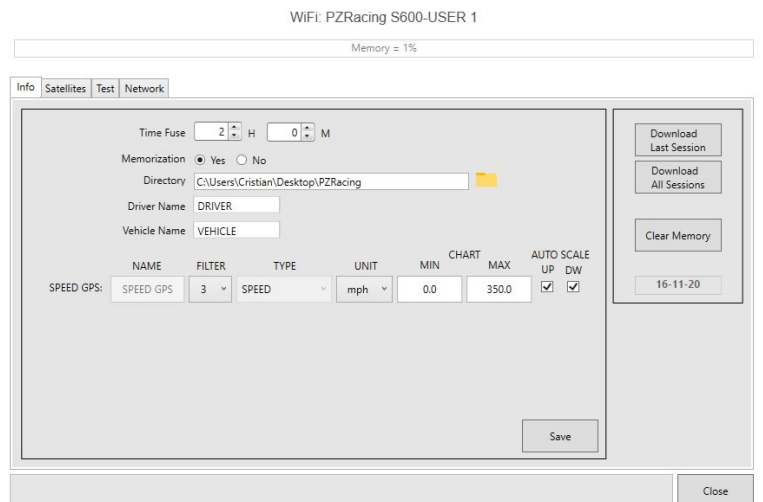
Vehicle name: name of the vehicle

Filter: filter set for GPS speed

Unit: GPS speed unit set (default Km/h)

Chart (min/max): minimum and maximum chart value for GPS speed

Auto Scale (up/down): auto scale for minimum and maximum chart value for GPS speed



Download

In the Info tab you can also execute the commands for downloading data and deleting the memory. The download speed of the product is approximately 1 minute for each hour of recording. We remind you that the memory can hold up to 6 hours of recording, so the maximum download duration is 6 minutes.

Download Last Session: download the last session recorded

Download All Sessions: download on the entire memory

Clear Memory: delete the complete memory. This operation takes about 30 seconds, do not turn off the receiver before the end of the operation.

Satellites

In the Satellites tab it will be possible to view the status of the satellites, checking the strength of the received signal (in Db) for each satellite acquired by the GPS receiver.

For a good reception the signal must be higher than 40Db (red line), the linked satellites are colored BLUE while those in RED are the satellites visible by the receiver but not currently used for the position triangulation.

Test

In the Test tab you can run a short test procedure and check the date of first start-up of the product.

Adding a new track

If your track is not in memory you can add a new track by yourself following the instructions in the appropriate manual on our download page : <https://www.pzracing.it/download/>

