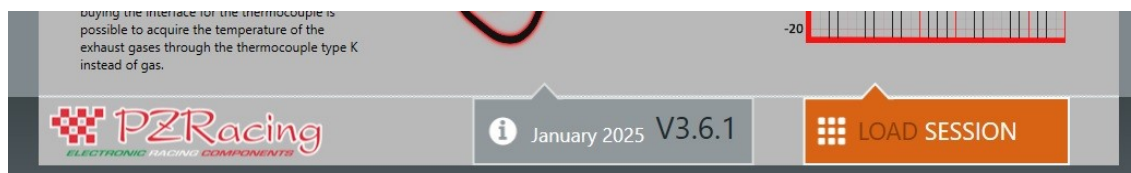


N.B: if a custom track already present in memory is loaded, the preloaded track will be excluded and the one loaded manually will be used. For example, if the Mugello track is loaded, the receiver will use the coordinates in the file loaded and will discard those already present in memory

N.B: the space available for “custom” tracks is single, so it will be possible to load only one track. If there is already a previously loaded “custom” track, it will be overwritten.

- Make sure you have the latest version of RacePro available, the software version appears when opening the program in the bottom center. Track loading and management of S700 series receivers is only available from version 3.6.1, previous versions are not compatible.



- Create a .TRK file (extension that identifies files with GPS coordinates of circuits) using the RacePro software or send a request to our customer service at tech@pzracing.it

- Switch on and off consecutively the GPS receiver for 3 times, the led will start to blink with a triple blink.

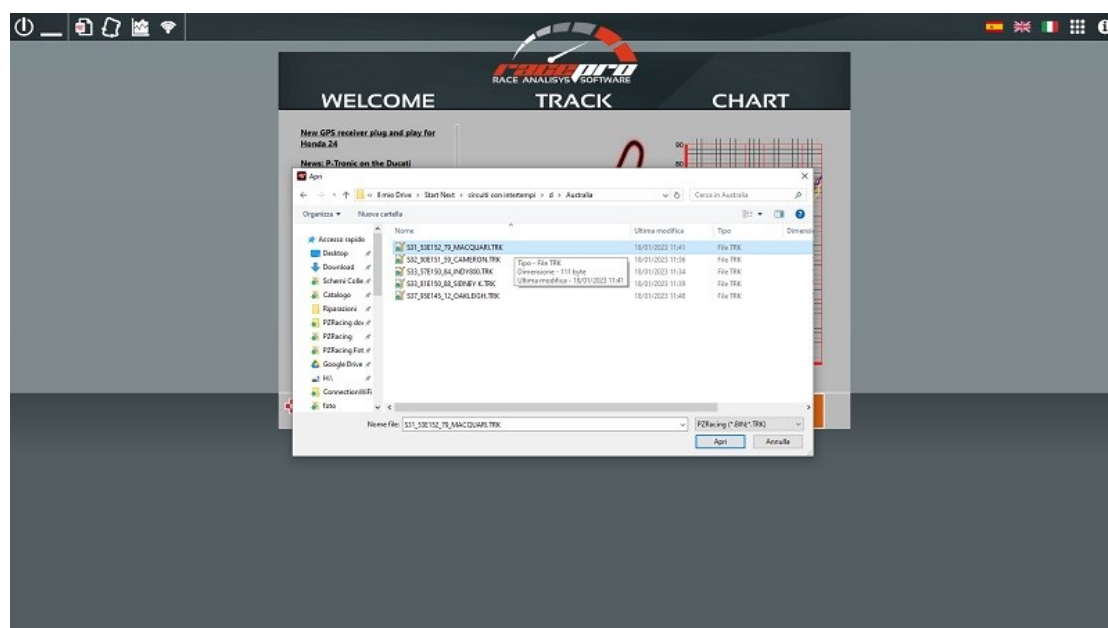
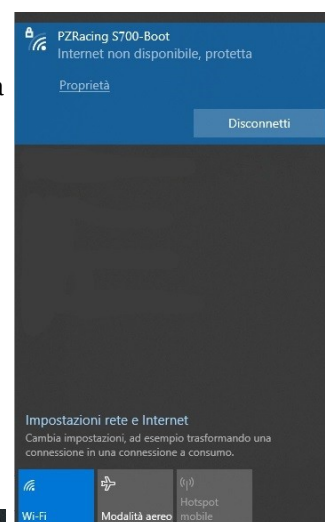
- Check the Wi-Fi networks available, you must find “PZRacing S700-Boot” network

- Connect to boot network using password “12345678”

- Open RacePro software and click on Wi-Fi button

- Software recognizes Boot modality and opens the load page

- - Select the XXXXX.TRK file and click the “Open” button



- Wait the end of the end of the upload and the confirm message, then switch off the receiver.